

HOOK TYPE SUSPENSION SYSTEM INSTALLATION GUIDE

Traffic and pedestrian applications worldwide benefit from the installation of PVC strip curtains. Our hook type suspension system is designed to create hands-free access between areas in both commercial and domestic applications.

The benefits of the system include heat retention, noise reduction, reduction in flying debris and pest ingress, area segregation, reduction in cross-contamination between areas, whilst maintaining visibility and access. The hook type suspension system is our economy model and is designed to promote ease of installation and maintenance.

INSTRUCTIONS FOR INSTALLATION

Rails (as standard) come with both a face and soffit fix option (see in image 1)

- **Face fit applications:**
Fix the rails with the side containing the hooks to the face of your opening;
- **Soffit fit applications:**
If fitting to the underside of the beam, door jamb or directly up into the ceiling fix the side without the hooks;
- For larger openings, it does not come as one continuous piece, in this instance butt the pieces together.

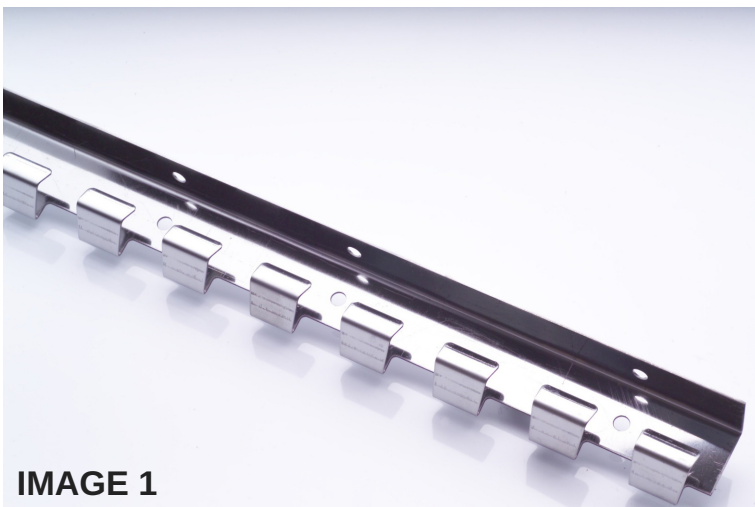


IMAGE 1

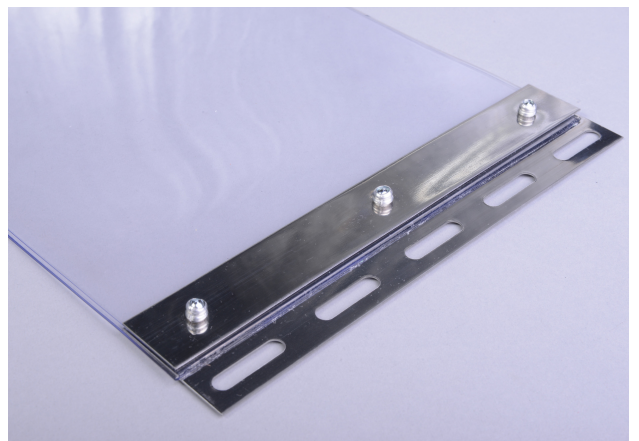
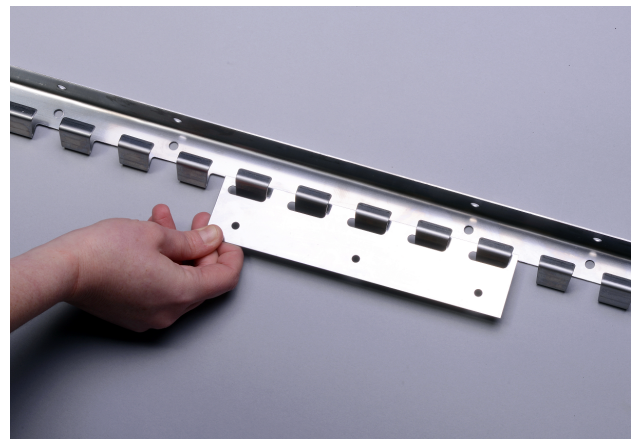
KEY TIPS

We are a supply only company so please ensure you have accurately measured your opening width and height. We add a small allowance so the goods can be cut to size and are never delivered too small.

- You should have the ability to work at height and to complete a basic industrial installation. PVC strip curtains are very simple but you will need the correct tools, fittings and experience.

-We will supply the nearest size increments to suit your opening. We make the curtains and rails as bespoke as possible but amendments on site may be required.

-Each PVC strip curtain requirement is different and we make each and every kit to order. Due to this fact, we cannot accept returns on any bespoke orders.



FOR ANY QUESTIONS OR COMMENTS, PLEASE SPEAK TO OUR EXPERIENCED TEAM

PVC STRIPS

- The strips must then be attached to the suspension rail in 2 rows, back and front.
- The back row is formed by leaving an odd number of fingers open between the plates. For example, on 200mm wide strips (medium overlap) you would fit the first strip at one end of the rail, leaving 3 open fingers on the rail before fitting the second strip, continue this right the way along your opening width - see the guide below for other strip width and overlap requirements.
- Go back to the start and fill in the gaps with the remaining strips. The front row is effectively formed by hanging strips over the gaps left in the back row.
- If there is a noticeable convex/concave to the strip width (PVC is extruded in roll form and this can occur, especially on some of the thicker/heavier strips). Please fit the back row with the convex side facing away from you - effectively linking the strip curtains together to create the optimal barrier, as in the diagram below.
- Each kit is supplied approximately 50mm wider & 50mm longer than the opening size. This is to ensure that kits can be tailored to a manageable level on site and provides a tolerance for error, moreover, PVC strip is a volatile product and can shrink or elongate slightly dependent on the application temperature and we must ensure the strips are not too short.
- Once fitted, leave the strips for 12 hours minimum (24 hours preferable) to let the folded/rolled kink in the strips fall out and to ensure the PVC reaches a natural equilibrium before trimming the bottom of each strip to the desired length using a sharp knife. We recommend that strips are cut 1/2 inch / 15mm of the floor to ensure that traffic can move freely without catching the strips on the floor.



DIAGRAM 1

HOW TO FIT THE STRIPS - STRIP WIDTH AND OVERLAP DEPENDENT

- Every PVC strip curtain will have different fitting requirements according to the strip width and overlap ordered.
- Please see the list, choose your strip width first then your overlap requirement to determine how many open fingers you must leave on the rail.

Width	Overlap	Open Fingers
200mm	40% (Med)	3
200mm	80% (Full)	1
300mm	28% (Min)	5
300mm	55% (Med)	3
300mm	85% (Full)	1
400mm	35% (Min)	7
400mm	55% (Med LW)	5
400mm	75% (Med HW)	3
400mm	95% (Full)	1

FOR ANY QUESTIONS OR COMMENTS, PLEASE SPEAK TO OUR EXPERIENCED TEAM